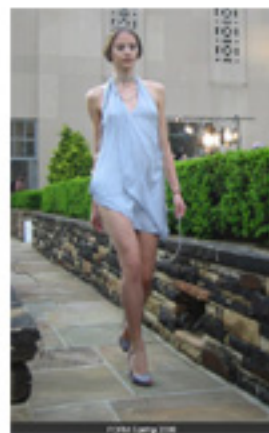


FORM Pre-Spring 2008 Show

By Angela Ambrosini Haliski

It's basic math of FORM and function.

The once, solo fashion label that made an appearance in Spring 2006, released the pre-spring 2008 FORM line of haute couture and the obsession of geometric patterns expressing the creative roots of founder Jerry Tam and his team, Kelly Andrews and Eric Werner.



Placing Manhattan on spiky stilettos, FORM infused iridescent chiffon, silks and charmeuse in the midst of massive skyscrapers draped over the busy city streets below.

Lost in seclusion, each piece floated above the summer heat with such minimalism as cocktail shaped dresses integrated the aesthetic appeal and inquisition. Short, tight hot pants with rope like chains that hung with intention as spherical and asymmetrical diamond kite dresses in silk chiffon and chalk taffeta roamed the silent catwalk.

Composed to enhance the feminine figure while branding FORM into the space-age structure of the future, the free-flowing, swinging and bare to the bone dresses were captured in time. Romantic to the eye and simple to wear, women of all ages can incorporate this FORM of living into their wardrobe.

Other pieces included the bekkakou kite top in ash silk charmeuse and high waisted hot pant and hand pouch for comfort and style, the most enduring empire diamond kite dress in sky blue silk chiffon and charmeuse swayed with ease, gode kite romper in sky blue heavy satin, windsock dress in ash knit, one shoulder flare kite dress and the empire, lamp-figured dress that marked the era of FORM.



Photos courtesy of Angela Ambrosini Haliski.

Making a lasting impression to the fashion world, fashionistas vastly await all new FORM of creations.

To read more about FORM please go to their web site at www.formnewyork.com.

To read more about Angela Ambrosini Haliski please visit her web site at www.angelaambrosini.com.